

The `simplecd` package*

Dániel Majoros

July 2, 2010

Abstract

The `simplecd` package provides printable cut-outs for various CD, DVD and other disc holders. The name of the package comes from its implementation and ease of use.

1 Introduction

The `simplecd` package was created for producing cut-outs for creating covers, inlays(inlets) for optical disc packaging such as jewel cases, keepcases. The covers were aimed for containing only simple text with different font sizes, but since it is only a `\parbox` in a tabular environment's cell, it can contain anything that a `\parbox` can contain.

There are also macros which can resize ready-to-print images to the appropriate size.

It is worth to decrease the document's margins, so the covers can fit onto an A4 sized paper. For this, use the `geometry` package, like so:

```
\usepackage[left=1cm, top=1cm, right=1cm, bottom=1cm]{geometry}
```

Since `simplecd` package uses the `rotating` package for rotation, one important note from the `rotating` package's documentation must be mentioned here.

Note that the package uses rotation facilities from the `graphicx` package. When generating DVI output, users should note that rotation is typically not visible in a DVI viewer: conversion to, and viewing, PostScript or PDF is necessary.

2 Usage

This section gives a detailed information on macros. Lists their parameters also. The universal macros are also detailed, which are behind the simple ones, and can be parameterised with additional information to meet other requirements.

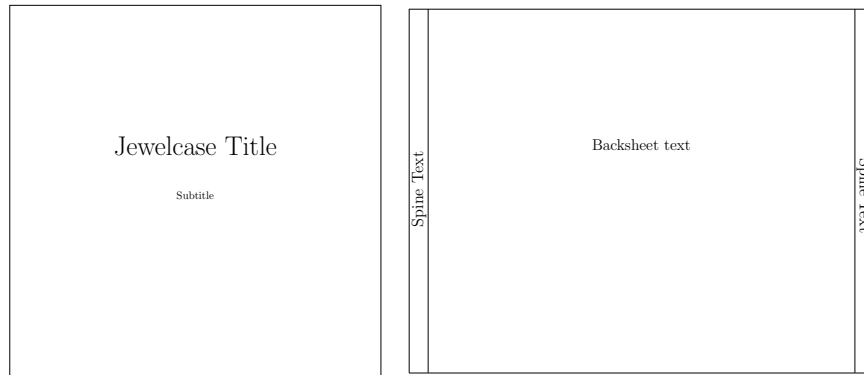
*This document corresponds to `simplecd` v1.0, dated 2010/07/01.

Do not put too many text inside a cover, or an unwanted resize can happen. Some of the examples in this documentation were rotated, and all of them were shrunk.

`\covers` The first and foremost macro is for the standard jewel case and it's backsheet with two spines. The parameters of the `\covers` macro are as follows: `\covers` [*backsheet text*] {*cover title*} {*spine text*}. The first two can be whole paragraphs with different font sized texts. For a new line, you can use `\\`, and for a skip, use `\vspace{length to skip}` in the text after a new line. Besides the first text part, the other texts after a `\vspace` can be resized with the `fix-cm` package's `\fontsize` command. The spine text will be printed on both spines. The spine text should be short enough to fit into the desired space.

Example:

```
\covers
[{\Large Backsheet text}]
{{\Huge Jewelcase Title} \\ \vspace{1cm} Subtitle}
{Spine Text}
```



`\frontcover` The `\frontcover`, which is called in the previously mentioned macro, produces the front cover for the jewel case. It's mandatory argument is the cover text: `\frontcover` {*cover text*}.

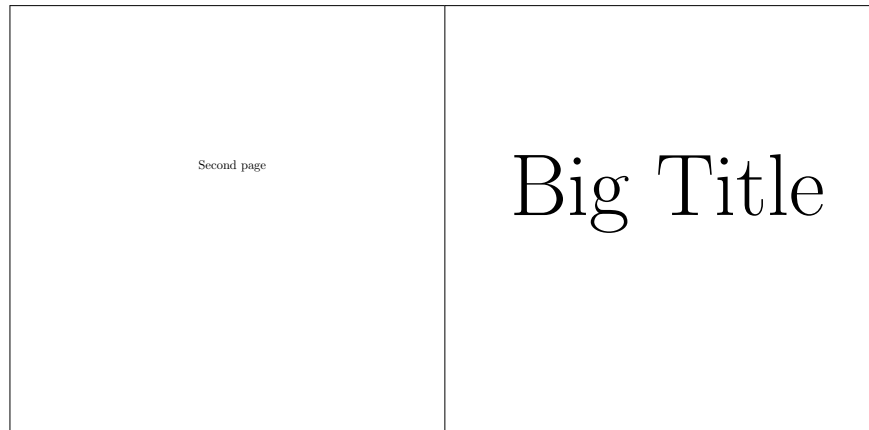
`\backsheet` The `\backsheet` macro is also called from the `\covers` macro. It produces the backsheet with two identical spines. The usage is `\backsheet` [*backsheet middle text*] {*spine text*}.

`\jewelspine` The `\jewelspine` macro creates a single spine for the jewelcase. It's usage is `\jewelspine` {*spine text*}.

`\djewel` The `\djewel` macro creates a double page jewel case cover. Text can be put on one side, then it should be folded in half. The usage is: `\djewel` {*first page text*} {*second page text*}.

Example:

```
\djewel
{\fontsize{70}{36}\selectfont Big Title}
{Second page}
```

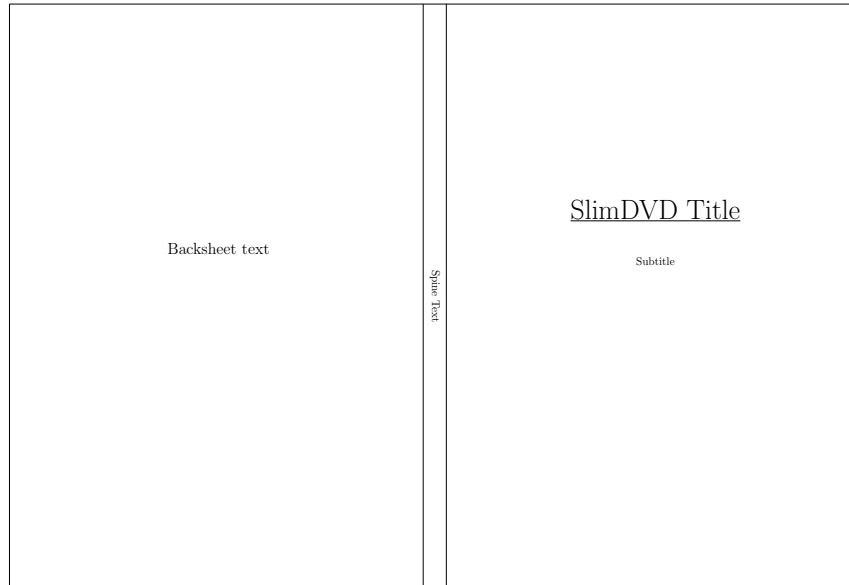


This is also an example of using costum sized fonts with the `fix-cm` package.

`\slimdvd` The `\slimdvd` and `\dvd` macros creates a slim and a simple DVD keepcase.
`\dvd` Text can be put on both sides plus the spine area. The `\bluray` macro creates a
`\bluray` keepcase for Blu-Ray disks. Their usage is: `\dvd [backside text] {<cover text>}`
`{<spine text>}`.

`\slimdvd` Example:

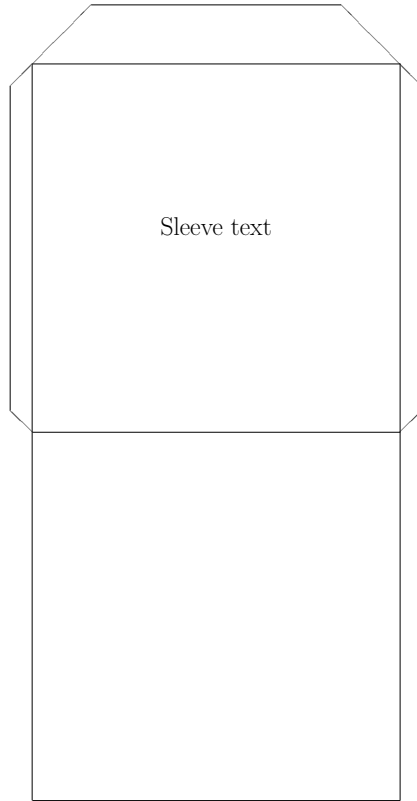
```
\slimdvd
  [{\Large Backsheet text}]
  {{\Huge \underline{SlimDVD Title}} \vspace{1cm} Subtitle}
  {Spine Text}
```



`\keepcase` The above mentioned macros are really similar, thus the introduction of the `\keepcase` macro. With this, one can create a custom sized keepcase in the format of cover, spine and a backside. Its usage is: `\keepcase [backtext] {cover text} {spinetext} {cover height} {cover width} {spine width}`. The cover width refers to one side's width without the spine.

`\sleeve` The `\sleeve` macro creates a disk-sleeve which requires some glue after cutting it out. The upper part can be used to close the sleeve. Text can be put on its cover. The usage is: `\sleeve {cover text}`.

Example:
`\sleeve {\Huge Sleeve text}}`



`\covering` The macros with the *img* ending are expecting an image, and resizing this
`\backsheeting` image to the appropriate cover size. The macros are `\covering`, `\backsheeting`,
`\dvdimg` `\dvdimg`, `\slimdvdimg`, `\bluraying`. Their usage is `\covering (<picture>)`. No
`\slimdvdimg` image macro for the sleeve. These macros does not keep the aspect ratio of the
`\bluraying` given image, thus it should already be at the correct ratio.

An example without the result: `\dvdimg{includegraphics{coverpic}}`

`\dvdinlay` The `\dvdinlay` and `\blurayinlay` macros create a one sided inlay for the
`\blurayinlay` appropriate keepcases. Their usage is `\dvdinlay {<text>}`. With the universal
`\inlay` `\inlay` macro, one can create a costum sized inlay. It's usage is: `\inlay {<text>}`
`\inlay` `{<inlay width>}{<inlay height>}`.

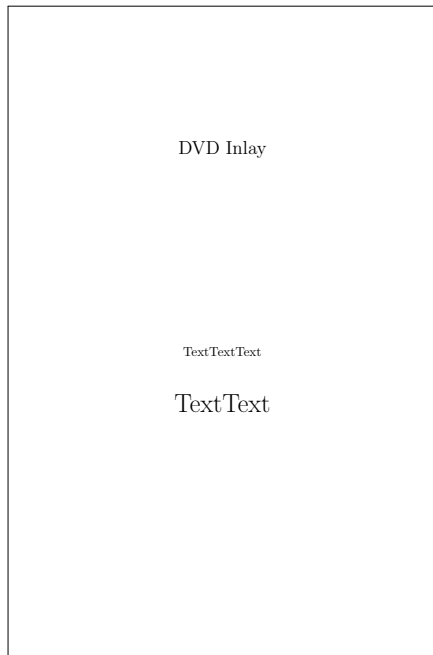
Example:

```

\dvdinlay
  {\Large DVD Inlay}

\vspace{5cm} TextTextText
  
```

```
\vspace{1cm} {\fontsize{20}{36}\selectfont TextText}}
```



3 Package Options

All of the above presented macros are containing some text alignment lengths. Without them, the texts would be centered vertically in the cells. The `noalign` option zeroes these alignment lengths, so one can align the texts individually with the `\vspace` commands inside the text.

As default, all covers contain folding lines. With the `nofold` option these can be removed. The only exception is the `\sleeve` macro where the areas to be glued are keeping their folding lines.

The `spiner` option rotates all spine texts with 180° . The `rotating` package (which is used for rotating) is somewhat incompatible with utf8 encoding and/or T1 font type when it comes to upside-down text. So do not use the packages mentioned below with this option:

```
\usepackage{t1enc}  
\usepackage{ucs}  
\usepackage[utf8x]{inputenc}  
\usepackage[T1]{fontenc}
```

4 Implementation

Used for rotating text.

```
1 \RequirePackage{rotating}
   Used for setting fix font size for spine texts.
2 \RequirePackage{fix-cm}
   Used for the m tabular column
3 \RequirePackage{array}
   Used for calculating lengths
4 \RequirePackage{calc}
   The noalign option sets all text aligning lengths to zero.
5 \DeclareOption{noalign}{
6   \setlength{\sc@jfcalign}{0cm}
7   \setlength{\sc@jbsalign}{0cm}
8   \setlength{\sc@slalign}{0cm}
9   \setlength{\sc@kcfalign}{0cm}
10  \setlength{\sc@kcbalign}{0cm}
11  \setlength{\sc@inalign}{0cm}
12  \setlength{\sc@djewalign}{0cm}
13 }
```

The `nofold` option removes the folding lines on the cut-outs.

```
14 \DeclareOption{nofold}{
15   \renewcommand{\sc@hfoldline}[1]{}
16   \setlength{\sc@vfoldline}{0pt}
17 }
```

`\sc@hfoldline` Creates a horizontal folding line.
Usage: `\sc@hfoldline` $\langle columns \rangle$

```
18 \newcommand{\sc@hfoldline}[1]{
19   \cline{#1}
20 }
```

`\sc@vfoldline` Size of the default vertical folding line.

```
21 \newlength{\sc@vfoldline}
22 \setlength{\sc@vfoldline}{0.4pt}
```

Redefines rotation degrees to rotate spine text with 180°.

```
23 \DeclareOption{spiner}{
24   \renewcommand{\sc@spinerotone}{180}
25   \renewcommand{\sc@spinerottwo}{90}
26   \renewcommand{\sc@spinerotthree}{270}
27 }
```

`\sc@spinerotone` No rotation by default.
Usage: `\sc@spinerotone`

```
28 \newcommand{\sc@spinerotone}{0}
```

`\sc@spinerottwo` Default rotation degree.
 Usage: `\sc@spinerottwo`
 29 `\newcommand{\sc@spinerottwo}{270}`

`\sc@spinerotthree` Default rotation degree.
 Usage: `\sc@spinerotthree`
 30 `\newcommand{\sc@spinerotthree}{90}`

Dimension names are created as follows: prefixed with `sc@`, then some letters for identifying the case, then place, then width or height.

CD jewelcase dimensions

31 `\newlength{\sc@cdjccoverheight}`
 32 `\setlength{\sc@cdjccoverheight}{120mm}`
 33 `\newlength{\sc@cdjccoverwidth}`
 34 `\setlength{\sc@cdjccoverwidth}{120mm}`
 35 `\newlength{\sc@cdjcbackheight}`
 36 `\setlength{\sc@cdjcbackheight}{117.5mm}`
 37 `\newlength{\sc@cdjcbackwidth}`
 38 `\setlength{\sc@cdjcbackwidth}{138mm}`
 39 `\newlength{\sc@cdjcspinewidth}`
 40 `\setlength{\sc@cdjcspinewidth}{6mm}`

Jewelcase spine fixed text font size

41 `\newcommand{\sc@cdjfontsize}{15}`

Disk sleeve dimensions

42 `\newlength{\sc@dskim}`
 43 `\setlength{\sc@dskim}{125mm}`

Slim DVD keepcase dimensions

44 `\newlength{\sc@sdvdccoverwidth}`
 45 `\setlength{\sc@sdvdccoverwidth}{128.5mm}`
 46 `\newlength{\sc@sdvdspinewidth}`
 47 `\setlength{\sc@sdvdspinewidth}{7mm}`

DVD keepcase dimensions

48 `\newlength{\sc@dvdkcheight}`
 49 `\setlength{\sc@dvdkcheight}{183mm}`
 50 `\newlength{\sc@dvdkcoverwidth}`
 51 `\setlength{\sc@dvdkcoverwidth}{129.5mm}`
 52 `\newlength{\sc@dvdkcspinewidth}`
 53 `\setlength{\sc@dvdkcspinewidth}{14mm}`
 54 `\newlength{\sc@dvdkcinletwidth}`
 55 `\setlength{\sc@dvdkcinletwidth}{115mm}`
 56 `\newlength{\sc@dvdkcinletheight}`
 57 `\setlength{\sc@dvdkcinletheight}{175mm}`

Blu-Ray case dimensions

58 `\newlength{\sc@brcoverwidth}`
 59 `\setlength{\sc@brcoverwidth}{128mm}`
 60 `\newlength{\sc@brcoverheight}`


```

61 \setlength{\sc@brcoverheight}{149mm}
62 \newlength{\sc@brspinewidth}
63 \setlength{\sc@brspinewidth}{14mm}
64 \newlength{\sc@brinletwidth}
65 \setlength{\sc@brinletwidth}{115mm}
66 \newlength{\sc@brinletheight}
67 \setlength{\sc@brinletheight}{140mm}

```

Width and correction of the invisible `\rule`'s column

```

68 \newlength{\sc@ircwidth}
69 \setlength{\sc@ircwidth}{0.1mm}
70 \newlength{\sc@ircorr}
71 \setlength{\sc@ircorr}{1mm}

```

Naming conventions in the aligning lengths: first letters are for the case, then f for front, b for back, and the align word.

Text aligning lengths These lengths ensure that the text is not in the vertical center of a cell, instead, they are little above of the center.

```

72 \newlength{\sc@jfcalign}
73 \setlength{\sc@jfcalign}{1.5cm}
74 \newlength{\sc@jbsalign}
75 \setlength{\sc@jbsalign}{3cm}
76 \newlength{\sc@slalign}
77 \setlength{\sc@slalign}{1.5cm}
78 \newlength{\sc@kcfalign}
79 \setlength{\sc@kcfalign}{4cm}
80 \newlength{\sc@kcbalign}
81 \setlength{\sc@kcbalign}{3cm}
82 \newlength{\sc@inalign}
83 \setlength{\sc@inalign}{3cm}
84 \newlength{\sc@djewalign}
85 \setlength{\sc@djewalign}{3cm}

```

```
86 \ProcessOptions\relax
```

The covers are created as simple tabular cells, and in the rightmost cell is an invisible `\rule` that ensures the height of the cell regardless of the text inserted into the other cells. The width of the cells are provided by the `m` column type of the `array` package.

The space produced with the `\vspace` macros are for aligning purposes. Without them, the texts would be vertically centered in the cell.

```

\covers Creates a jewel case cover with a front and a backsheet.
Usage: \covers [backsheet text] {cover title} {spine text}
87 \DeclareRobustCommand{\covers}[3][\ ]{
88   \frontcover{#2}
89
90   \vspace*{0.5cm}
91   \backsheet[#1]{#3}
92 }

```

`\frontcover` Creates front cover for a jewel case.
Usage: `\frontcover {<cover title>}`

```

93 \DeclareRobustCommand{\frontcover}[1]{
94   \sc@cell{#1}{\sc@cdjccoverwidth}{\sc@cdjccoverheight}%
95   {\vspace{\sc@jfcalign}}
96 }

```

`\backsheet` Creates backsheet for a jewel case with 2 spines.
Usage: `\backsheet [(<backsheet middle text>)] {<spine text>}`

```

97 \DeclareRobustCommand{\backsheet}[2][\ ]{
98   \begin{tabular}%
99     {|\hspace{0.4mm}m{\sc@cdjcspinewidth-0.4mm}@{}%
100      !{\vrule width \sc@vfoldline}%
101      @{}m{\sc@cdjcbackwidth}@{}%
102      !{\vrule width \sc@vfoldline}@{}%
103      m{\sc@cdjcspinewidth-0.4mm}@{\hspace{0.4mm}}%
104      |m{\sc@ircwidth}}
105   \cline{1-3}
106   \centering%
107   \begin{turn}{\sc@spinerotthree}%
108     {\fontsize{\sc@cdjfontsize}{36}\selectfont #2 }%
109   \end{turn} %
110   & \parbox[c]{\sc@cdjcbackwidth}{\centering #1 \\
111     \vspace{\sc@jbsalign}}%
112   & \centering %
113   \begin{turn}{\sc@spinerottwo}%
114     {\fontsize{\sc@cdjfontsize}{36}\selectfont #2}%
115   \end{turn} & \rule{0pt}{\sc@cdjcbackheight-\sc@ircorr} \\
116   \cline{1-3}
117   \end{tabular}
118 }

```

`\jewelspine` Creates a single spine for a jewel case.
Usage: `\jewelspine {<text>}`

```

119 \DeclareRobustCommand{\jewelspine}[1]{
120   \begin{tabular}{|@{}m{\sc@cdjcbackheight}@{}|m{\sc@ircwidth}}
121     \cline{1-1} %
122     \centering %
123     {\fontsize{\sc@cdjfontsize}{36}\selectfont #1}& %
124     \rule{0pt}{\sc@cdjcspinewidth-0.1cm} \\
125     \cline{1-1}
126   \end{tabular}
127 }

```

`\sleeve` Creates a disk sleeve for cutting out and glueing together.
Usage: `\sleeve {<middle text>}`

```

128 \DeclareRobustCommand{\sleeve}[1]{
129   \begin{tabular}{m{10mm}|@{}m{\sc@dtdim}@{}|m{10mm}m{\sc@ircwidth}}
130     \multicolumn{3}{c}{\setlength{\unitlength}{0.5cm}

```

```

131     \begin{picture}(0,0)%
132         \put(-12.5,-0.25){\line(1,1){4}}
133         \put(-8.5,3.75){\line(1,0){17}}
134         \put(12.5,-0.25){\line(-1,1){4}}
135     \end{picture} \rule{0pt}{3cm} \\
136     \cline{2-2}
137     \centering \setlength{\unitlength}{0.5cm}
138     \begin{picture}(0,0)%
139         \put(1.45,-12.38){\line(-1,1){1.5}}%
140         \put(-0.06,-10.9){\line(0,1){22.08}} %
141         \put(-0.06,11.18){\line(1,1){1.5}}%
142     \end{picture} & \parbox[c]{\sc@dsdim}%
143         {\centering #1 \\ \vspace{\sc@slalign}} &%
144     \setlength{\unitlength}{0.5cm} %
145     \begin{picture}(0,0)%
146         \put(-0.45,-12.38){\line(1,1){1.5}}%
147         \put(1.04,-10.9){\line(0,1){22.08}} %
148         \put(1.04,11.18){\line(-1,1){1.5}}%
149     \end{picture} & \rule{0pt}{\sc@dsdim-\sc@ircorr}\\
150     \sc@hfoldline{2-2}
151     & & \rule{0pt}{\sc@dsdim-0.1cm} \\
152     \cline{2-2}
153 \end{tabular}
154 }

```

\keepcase Universal macro for creating keeppcases in various sizes. Usage: `\keepcase`
`[{<backtext>}]` `{<cover text>}` `{<spinetext>}` `{<cover height>}` `{<cover width>}` `{<spine width>}`

```

155 \DeclareRobustCommand{\keepcase}[6][{}{
156     \begin{tabular}{|@{}m{#4}@{}|m{\sc@ircwidth}}
157         \cline{1-1}
158         \centering
159         \begin{sideways} \parbox[c]{#5}{\centering #2 %
160             \\ \vspace{\sc@kcfalign}} %
161         \end{sideways} & \rule{0pt}{#5-\sc@ircorr} \\
162         \sc@hfoldline{1-1} \centering %
163         \begin{turn}{\sc@spinerotone}%
164             #3 %
165         \end{turn}%
166         & \rule{0pt}{#6-\sc@ircorr} \\
167         \sc@hfoldline{1-1}%
168         \centering %
169         \begin{sideways} \parbox[c]{#5}{\centering #1 \\ \\ %
170             \vspace{\sc@kcbalign}} \end{sideways} & %
171         \rule{0pt}{#5-\sc@ircorr} \\
172         \cline{1-1}
173     \end{tabular}
174 }

```

\slimdvd Creates a slim dvd keeppcase cover.

```

Usage: \slimdvd [back text] {cover text} {spine text}
175 \DeclareRobustCommand{\slimdvd}[3] [] {
176     \keepcase[#1]{#2}{#3}{\sc@dvdckheight}{\sc@sdvdccoverwidth}%
177         {\sc@sdvdspinewidth}
178 }

\ dvd Creates a dvd keepcase.
Usage: \ dvd [back text] {cover text} {spine text}
179 \DeclareRobustCommand{\ dvd}[3] [] {
180     \keepcase[#1]{#2}{#3}{\sc@dvdckheight}{\sc@dvdckcoverwidth-1.5mm}%
181         {\sc@dvdckspinewidth}
182 }

\ bluray Creates a Blu-Ray keepcase.
Usage: \ bluray [backtext] {cover text} {spine text}
183 \DeclareRobustCommand{\ bluray}[3] [] {
184     \keepcase[#1]{#2}{#3}{\sc@brcoverheight}{\sc@brcoverwidth}%
185         {\sc@brspinewidth}
186 }

\ covering Resizes the image for a jewel case cover.
Usage: \ covering (picture)
187 \DeclareRobustCommand{\ covering}[1] {
188     \resizebox{\sc@cdjccoverwidth}{\sc@cdjccoverheight}{#1}
189 }

\ backsheeting Resizes the image for a jewel case backsheet with spines.
Usage: \ backsheeting (picture)
190 \DeclareRobustCommand{\ backsheeting}[1] {
191     \resizebox{\sc@cdjcbackwidth+\sc@cdjcspinewidth*2}%
192         {\sc@cdjcbackheight}{#1}
193 }

\ slimdvdimg Resizes an image for the slim dvd keepcase.
Usage: \ slimdvdimg (picture)
194 \DeclareRobustCommand{\ slimdvdimg}[1] {
195     \resizebox{\sc@dvdckheight}%
196         {\sc@sdvdccoverwidth*2+\sc@sdvdspinewidth}{#1}
197 }

\ dvdimg Resizes an image for a dvd keepcase.
Usage: \ dvdimg (picture)
198 \DeclareRobustCommand{\ dvdimg}[1] {
199     \resizebox{\sc@dvdckheight}%
200         {\sc@dvdckcoverwidth*2+\sc@dvdckspinewidth}{#1}
201 }

```

`\bluraying` Resizes an image for the Blu-Ray keepcase.
Usage: `\bluraying` (*picture*)

```

202 \DeclareRobustCommand{\bluraying}[1]{
203   \resizebox{\sc@brcoverheight}%
204     {\sc@brcoverwidth*2+\sc@brspinewidth}{#1}
205 }

```

`\sc@cell` Creates a single cell for a cover, inlay.
Usage: `\sc@cell` {*text*} {*width*} {*height*} {*aligning space*}

```

206 \DeclareRobustCommand{\sc@cell}[4]{
207   \begin{tabular}{|@{}m{#2}@{}|m{\sc@ircwidth}}
208     \cline{1-1}%
209     \centering %
210     \parbox[c]{#2}{\centering #1 \ \ #4} & \rule{0pt}{#3-\sc@ircorr}\
211     \cline{1-1}
212   \end{tabular}
213 }

```

`\inlay` Creates a costum sized inlay. Usage: `\inlay` {*text*} {*width*} {*height*}

```

214 \DeclareRobustCommand{\inlay}[3]{
215   \sc@cell{#1}{#2}{#3}{\vspace{\sc@inalign}}
216 }

```

`\dvdinlay` Creates an inlay card for a dvd/slimdvd keepcase.
Usage: `\dvdinlay` {*text*}

```

217 \DeclareRobustCommand{\dvdinlay}[1]{
218   \inlay{#1}{\sc@dvdckinletwidth}{\sc@dvdckinletheight}
219 }

```

`\blurayinlay` Creates an inlay for a Blu-Ray keepcase. Usage: `\blurayinlay` {*text*}

```

220 \DeclareRobustCommand{\blurayinlay}[1]{
221   \inlay{#1}{\sc@brinletwidth}{\sc@brinletheight}
222 }

```

`\djewel` Creates a two-page jewel case cover.
Usage: `\djewel` {*first page text*} {*second page text*}

```

223 \DeclareRobustCommand{\djewel}[2]{
224   \begin{tabular}{|@{}m{\sc@cdjccoverheight}@{}|m{\sc@ircwidth}}
225     \cline{1-1} %
226     \centering%
227     \begin{turn}{270}%
228       \parbox[c]{\sc@cdjccoverwidth-\sc@ircorr}%
229         {\centering #2 \ \ \vspace{\sc@djewalign}}%
230     \end{turn}& \rule{0pt}{\sc@cdjccoverwidth-\sc@ircorr} \
231     \sc@hfoldline{1-1} %
232     \centering%
233     \begin{turn}{270}%
234       \parbox[c]{\sc@cdjccoverwidth-\sc@ircorr}%
235         {\centering #1 \ \ \vspace{\sc@jfcalign}}%

```

```

236         \end{turn} & \rule{0pt}{\sc@cdjccoverwidth-\sc@ircorr} \\
237         \cline{1-1}
238     \end{tabular}
239 }

```

Change History

v1.0
 General: Initial version 1

Index

Numbers written in *italic* refer to the page where the corresponding entry is described; numbers underlined refer to the code line of the definition; numbers in *roman* refer to the code lines where the entry is used.

		S	
\sqcup	87, 97, 169	<code>\sc@brcoverheight</code> .	<code>\sc@dvdkcoverwidth</code> 50, 51, 180, 200
B	 60, 61, 184, 203	<code>\sc@dvdkcheight</code> 48, 49, 176, 180, 195, 199
<code>\backsheet</code>	2, 91, <u>97</u>	<code>\sc@brcoverwidth</code> 58, 59, 184, 204	<code>\sc@dvdkcinletheight</code> 56, 57, 218
<code>\backsheeting</code>	5, <u>190</u>	<code>\sc@brinletheight</code> 66, 67, 221	<code>\sc@dvdkcinletwidth</code> 54, 55, 218
<code>\bluray</code>	3, <u>183</u>	<code>\sc@brinletwidth</code> 64, 65, 221	<code>\sc@dvdkcsplinewidth</code> 52, 53, 181, 200
<code>\bluraying</code>	5, <u>202</u>	<code>\sc@brspinewidth</code> 62, 63, 185, 204	<code>\sc@hfoldline</code> 15, <u>18</u> , 150, 162, 167, 231
<code>\blurayinlay</code>	5, <u>220</u>	<code>\sc@cdjcbackheight</code> 35, 36, 115, 120, 192	<code>\sc@inalign</code> 11, 82, 83, 215
C		<code>\sc@cdjcbackwidth</code> 37, 38, 101, 110, 191	<code>\sc@ircorr</code> 70, 71, 115, 149, 161, 166, 171, 210, 228, 230, 234, 236
<code>\covering</code>	5, <u>187</u>	<code>\sc@cdjccoverheight</code> 31, 32, 94, 188, 224	<code>\sc@ircwidth</code> 68, 69, 104, 120, 129, 156, 207, 224
<code>\covers</code>	2, <u>87</u>	<code>\sc@cdjccoverwidth</code> 33, 34, 94, 188, 228, 230, 234, 236	<code>\sc@jbsalign</code> 7, 74, 75, 111
D		<code>\sc@cdjcsplinewidth</code> 39, 40, 99, 103, 124, 191	<code>\sc@jfcalign</code> 6, 72, 73, 95, 235
<code>\djewel</code>	2, <u>223</u>	<code>\sc@cdjfontsize</code> 41, 108, 114, 123	<code>\sc@kcbalign</code> 10, 80, 81, 170
<code>\dvd</code>	3, <u>179</u>	<code>\sc@cell</code> 94, <u>206</u> , 215	<code>\sc@kcfalign</code> 9, 78, 79, 160
<code>\dvdimg</code>	5, <u>198</u>	<code>\sc@djewalign</code> 12, 84, 85, 229	
<code>\dvdinlay</code>	5, <u>217</u>	<code>\sc@dsdim</code> 42, 43, 129, 142, 149, 151	
F			
<code>\frontcover</code>	2, 88, <u>93</u>		
I			
<code>\inlay</code>	5, <u>214</u> , 218, 221		
J			
<code>\jewelspine</code>	2, <u>119</u>		
K			
<code>\keepcase</code>	4, <u>155</u> , 176, 180, 184		

<code>\sc@sdrvcoverwidth</code> 24, <u>28</u> , 163	.. 16, <u>21</u> , 100, 102
.. 44, 45, 176, 196	<code>\sc@spinerotthree</code> .	<code>\sleeve</code> 4, <u>128</u>
<code>\sc@sdrvspinewidth</code> 26, <u>30</u> , 107	<code>\slimdvd</code> 3, <u>175</u>
.. 46, 47, 177, 196	<code>\sc@spinerottwo</code> ...	<code>\slimdvdimg</code> 5, <u>194</u>
<code>\sc@slalign</code> 8, 76, 77, 143 25, <u>29</u> , 113	
<code>\sc@spinerotone</code> ...	<code>\sc@vfoldline</code>	